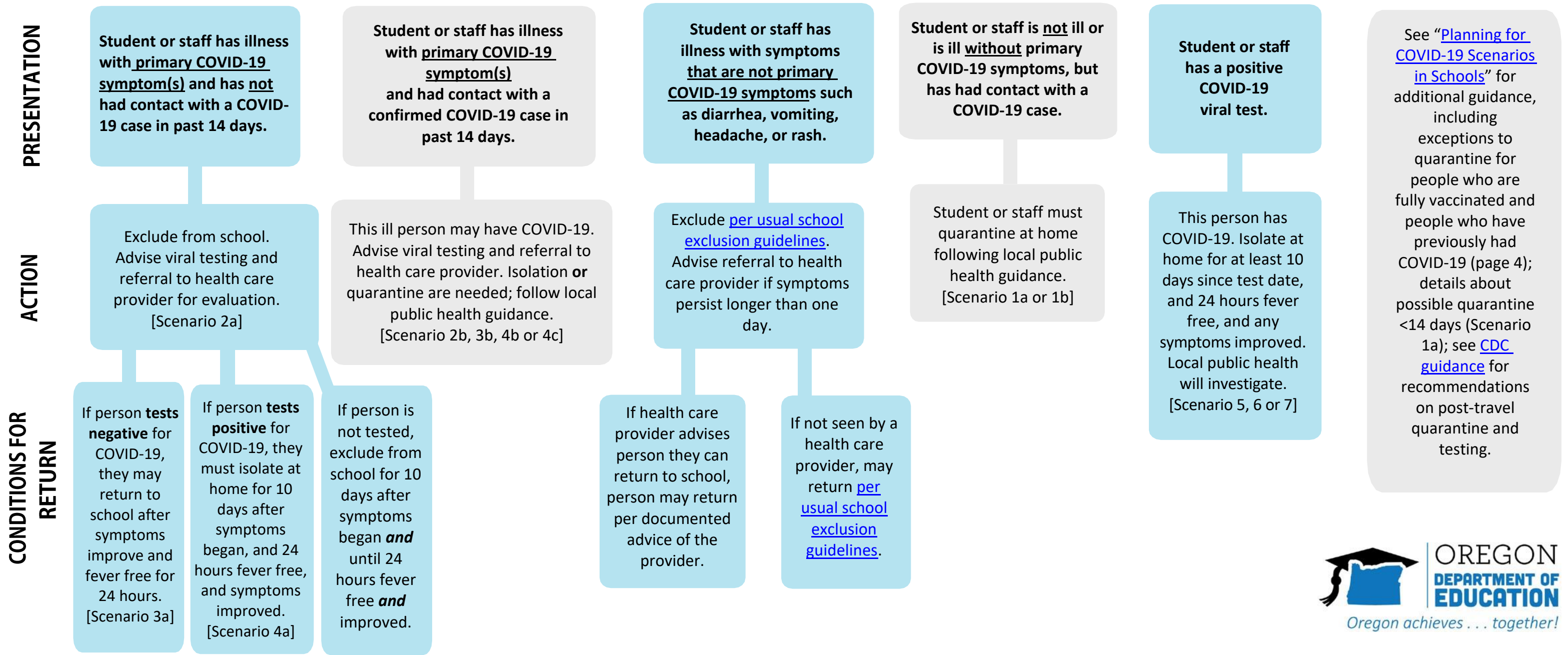


COVID-19 Exclusion Summary Guidance for K-12

Version 7/22/2021



Important Definitions

Primary COVID-19 symptoms include the following:

- Fever of 100.4°F or higher
- Chills
- Cough
- Shortness of breath
- Difficulty breathing
- New loss of taste or loss of smell

Fever free means a temperature less than 100.4°F without the use of fever-reducing medication.

Quarantine separates and restricts the movement of people who were exposed to a contagious disease to see if they become sick and prevents disease spread (determined by local public health authority).

Isolation separates people with a contagious disease from other people to prevent disease spread (determined by local public health authority).

Exclusion means keeping a student with symptoms or diagnosis of a contagious disease out of school to prevent possible disease spread (determined by school).

Confirmed case means a person who has a positive result on a COVID-19 diagnostic test.

Presumptive case means a person who has not had a positive result on a COVID-19 diagnostic test but has symptoms after contact with a confirmed COVID-19 case. (Other situations are possible; refer to Planning for COVID-19 Scenarios in Schools for additional information.)